



Metform

Home to more Hatebur horizontal hot forging machines than any other supplier in North America.

We focus on high precision and high output at high temperatures

Key Products

Axilok

Integralok

Securex

Hot Forged Gear Blanks

Hot Forged Spindle Nuts

Hot Forged Large Industrial Nuts

Large Bolts and Pins

Cam Lobes

Bearing Races

Wind Power Components

SBJ Housings

Industrial Hot Forged Components



MacLean-Fogg
COMPONENT SOLUTIONS

Who we are

Metform is the Hot Forging division of MacLean-Fogg Component Solutions. Metform consists of three locations in Savanna, IL (two) and Mt. Carroll, IL (one).

What we do

Our expertise consists of horizontal hot forging, machining and light assembly of components primarily for transportation industries. We also provide CNC machining, thread rolling, tapping, warm and cold forming, PTFE coating, heat treatment, broaching and hobbing, drilling, assembly, staking and deflection.

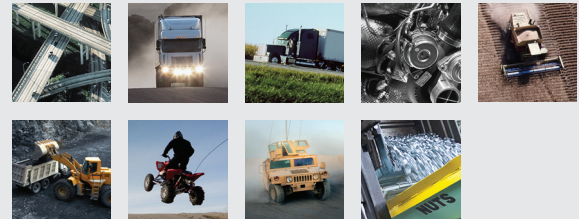
Key Products

Axilok
Integralok
Securex
Hot Forged Gear Blanks
Hot Forged Spindle Nuts
Hot Forged Large Industrial Nuts
Large Bolts and Pins
Cam Lobes
Bearing Races
Wind Power Components
SBJ Housings
Industrial Hot Forged Components



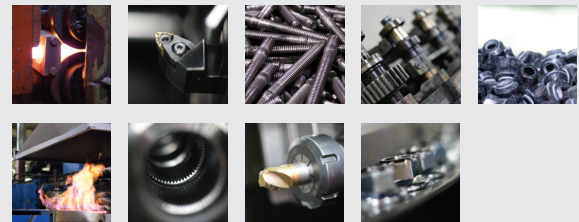
Industries Served

Automotive
Heavy-Duty Truck
Heavy-Duty Trailer
Industrial Engine
Agriculture
Off Highway
Recreational Vehicles
Military and Defense
Industrial Solutions



Core Competencies

Horizontal Hot Forging
CNC Machining
Thread Rolling / Tapping
Warm & Cold Forming
Coating (PTFE)
Hot Treatment (Quench & Temper / Annealing)
Broaching / Hobbing
Drilling
Assembly / Staking / Deflection



Member Organizations



© Copyright 2012, MacLean-Fogg Component Solutions. MacLean-Fogg Component Solutions, the MacLean-Fogg Component Solutions logo, Axilok, Integrelok and Securex are trademarks of MacLean-Fogg Company.

LOCATIONS:

905 SOUTH JACKSON STREET, MT. CARROLL, IL 61053
7034 ROUTE 84 SOUTH, SAVANNA, IL 61074
2551 WACKER ROAD, SAVANNA, IL 61074

P 248.853.2525 MFCS@MACLEANFOGG.COM macleanfoggcs.com



MacLean-Fogg
COMPONENT SOLUTIONS